



PROPOSED ATTENDANCE BOUNDARY ADJUSTMENT

Bettye Myers and McMath Middle Schools
2017-2018 Academic School Year

Denton ISD Staff

- Dr. Daniel Lopez, Area Superintendent for Academic Programs
- Susannah O'Bara, Area Superintendent for Academic Programs
- Mario Zavala, Director of Communications
- Dr. Sheryl Alden, Assistant Director of Transportation
- Dr. Debra Nobles, Principal, McMath Middle School
- Mrs. Angela Ricks, Principal, Myers Middle School



Meeting Agenda

- Denton ISD Growth Overview & **Proposed** Adjustment

Dr. Daniel Lopez– Area Superintendent

- Break

Opportunity to review the map, ask more specific questions, and complete comment forms

- Questions & Answers

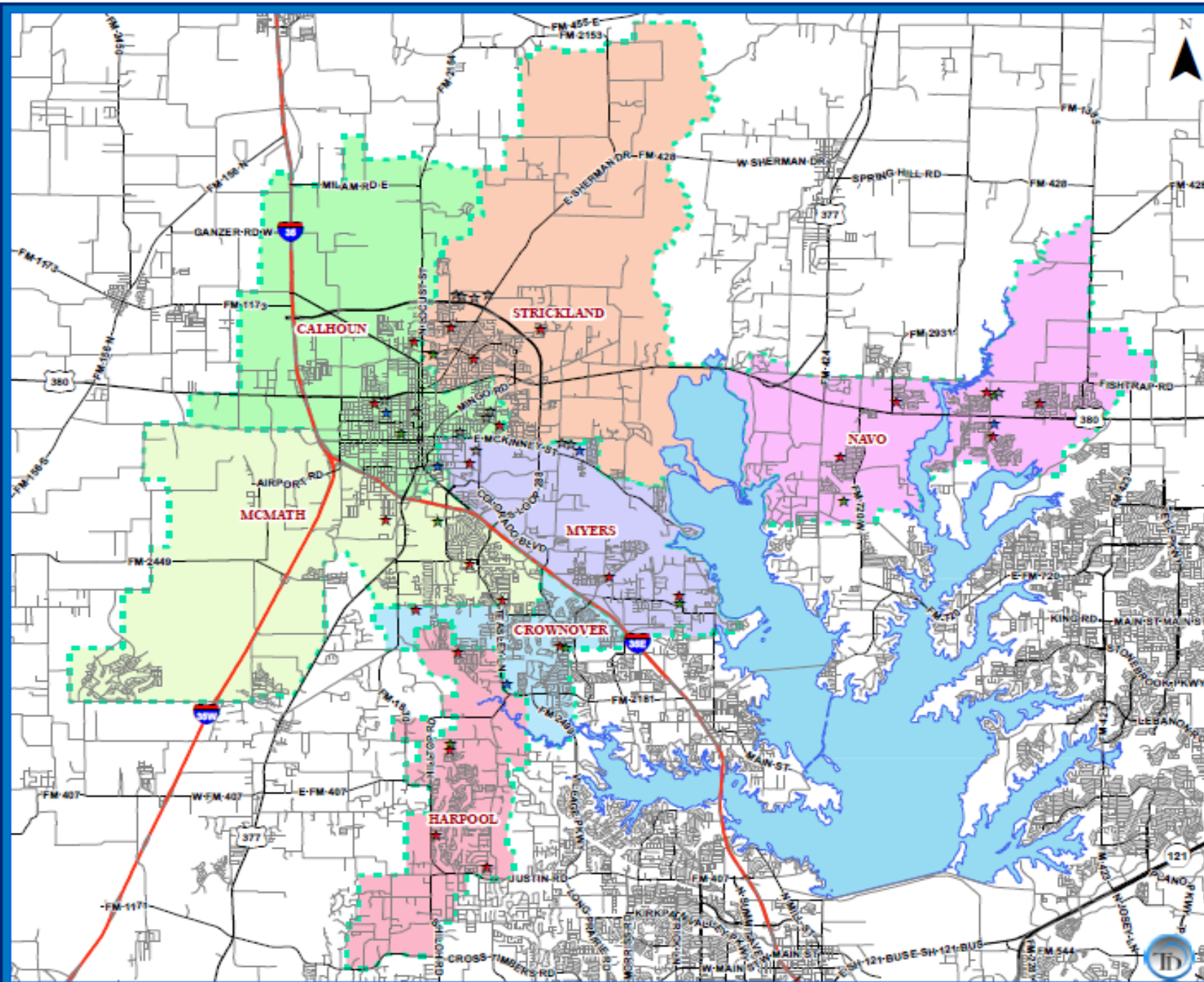
District Team



DENTON INDEPENDENT SCHOOL DISTRICT

Middle School Attendance Zones

2016-2017



- | | | |
|---------------------|---------------------|------------------------|
| Schools | Roads | Lake Lewisville |
| ★ Elementary School | — Local Roads | Lake Lewisville |
| ★ Middle School | — Major Arterial | |
| ★ High School | — Secondary Highway | |
| ★ Alternative | — Primary Highway | |

Middle Boundaries

CALHOUN	705 CONGRESS ST, DENTON, TX 76201	(940)326-2400
CROWNOVER	1901 CREEKSIDE DR, CORINTH, TX 76210	(940)369-4700
HARPOOL	9501 STACEE LANE, ARGYLE, TX 8236	(940)369-1700
MCMATH	1900 JASON DRIVE, DENTON, TX 76205	(940)369-3300
MYERS	131 GARZA RD, SHADY SHORES, TX 76208	(940)369-1500
NAVO	1701 NAVO RD, AUBREY, TX 76227	(972)347-7300
STRICKLAND	324 E WINDSOR DR, DENTON, TX 76209	(940)369-4200

Current Middle School Boundaries



Growth Over 5 & 10 Years

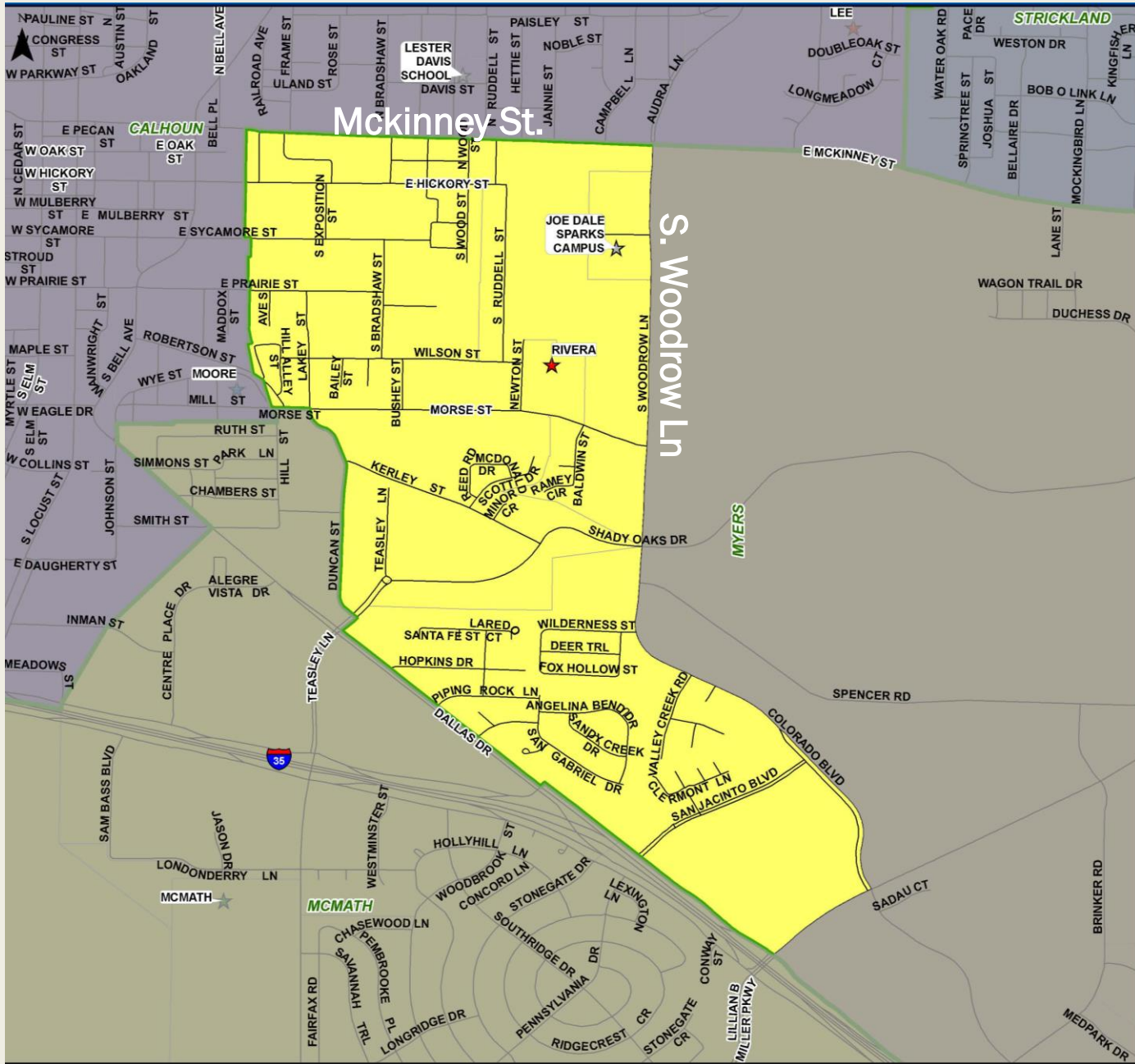
		Current	ENROLLMENT PROJECTIONS									
Campus Name	Capacity	2016/17	2017/18	2018/19	2019/20	2020/21	2021/22	2022/23	2023/24	2024/25	2025/26	2026/27
Calhoun Middle School	1,268	711	715	717	729	747	765	786	791	832	860	890
McMath Middle School	1,181	750	719	725	766	810	865	914	998	1,076	1,146	1,242
Navo Middle School	1,181	1,381	1,557	1,755	1,864	2,128	2,193	2,361	2,395	2,510	2,614	2,728
Crownover Middle School	1,181	946	925	929	931	917	868	841	820	833	842	859
Strickland Middle School	1,334	873	865	894	904	924	958	942	937	982	999	1,009
Harpool Middle School	1,181	981	984	932	950	918	876	844	823	815	840	865
Bette Myers Middle School	1,323	899	896	961	960	1,001	1,004	1,023	1,003	1,057	1,081	1,108
MIDDLE SCHOOL TOTALS	8,649	6,541	6,661	6,913	7,104	7,445	7,529	7,711	7,767	8,105	8,382	8,701
Middle School Absolute Change		185	120	252	191	341	84	182	56	338	277	319
Middle School Percent Change		2.91%	1.83%	3.78%	2.76%	4.80%	1.13%	2.42%	0.73%	4.35%	3.42%	3.81%

Active Subdivision



Villages of Carmel

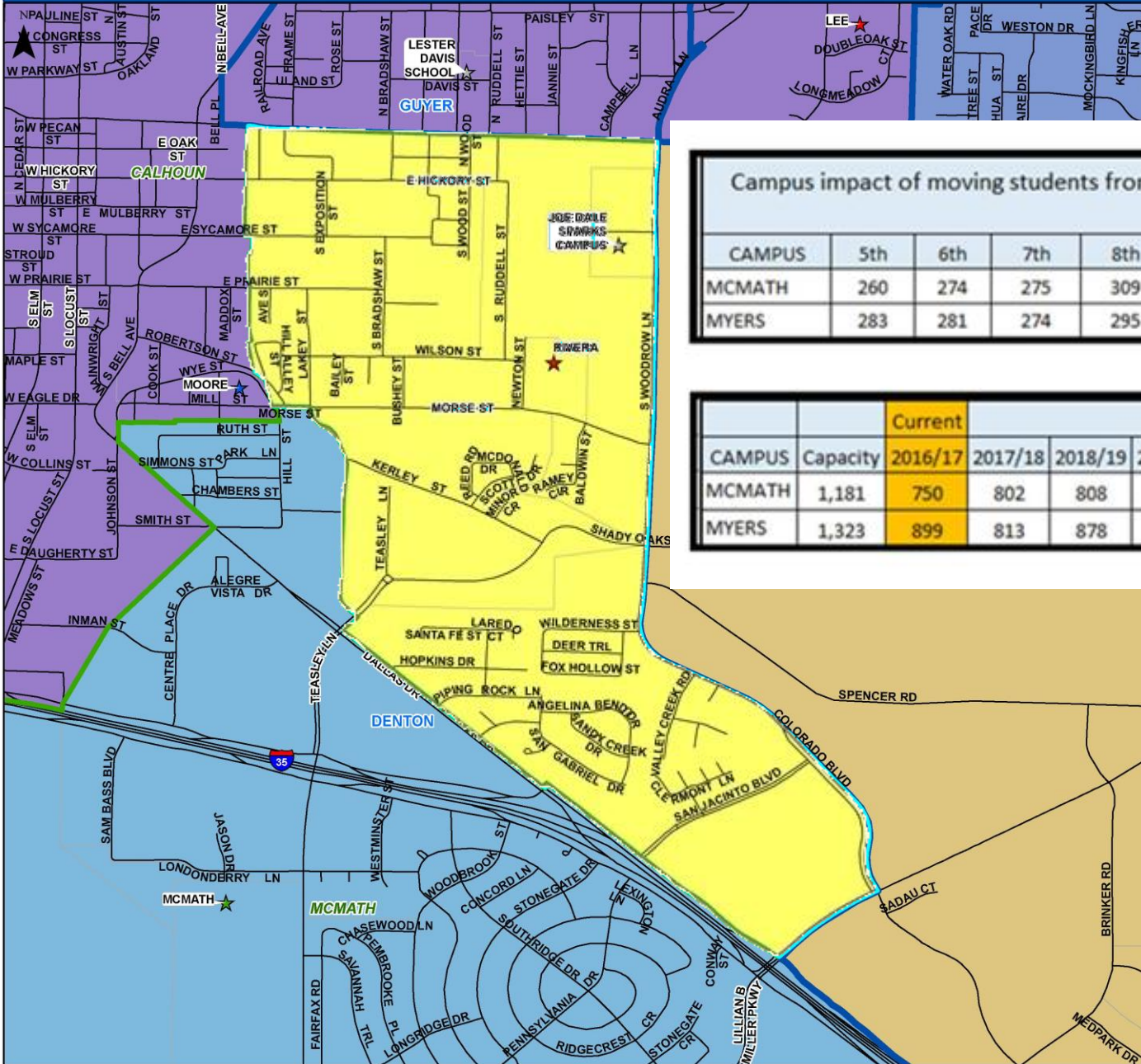
- 735 total lots
- 287 future lots
- 399 homes occupied
- 14 vacant developed lots
- 28 under construction
- Groundwork underway on 144 lots, delivering fall 2016
- Delivering 143 lots summer 2017
- Pecan Creek Elementary



Review of HS Boundary Change 2016-2017

Denton ISD: Middle School McMath/Myers Adjustment

DRAFT



Campus impact of moving students from Myers to McMath based on 2016/17 Students residing in impacted area.

CAMPUS	5th	6th	7th	8th	5TH-7TH	6TH-8TH	ED (6TH-8TH)	%ED	CAPACITY	UTILIZATION
MCMATH	260	274	275	309	809	858	421	49%	1,181	73%
MYERS	283	281	274	295	838	850	533	63%	1,323	64%

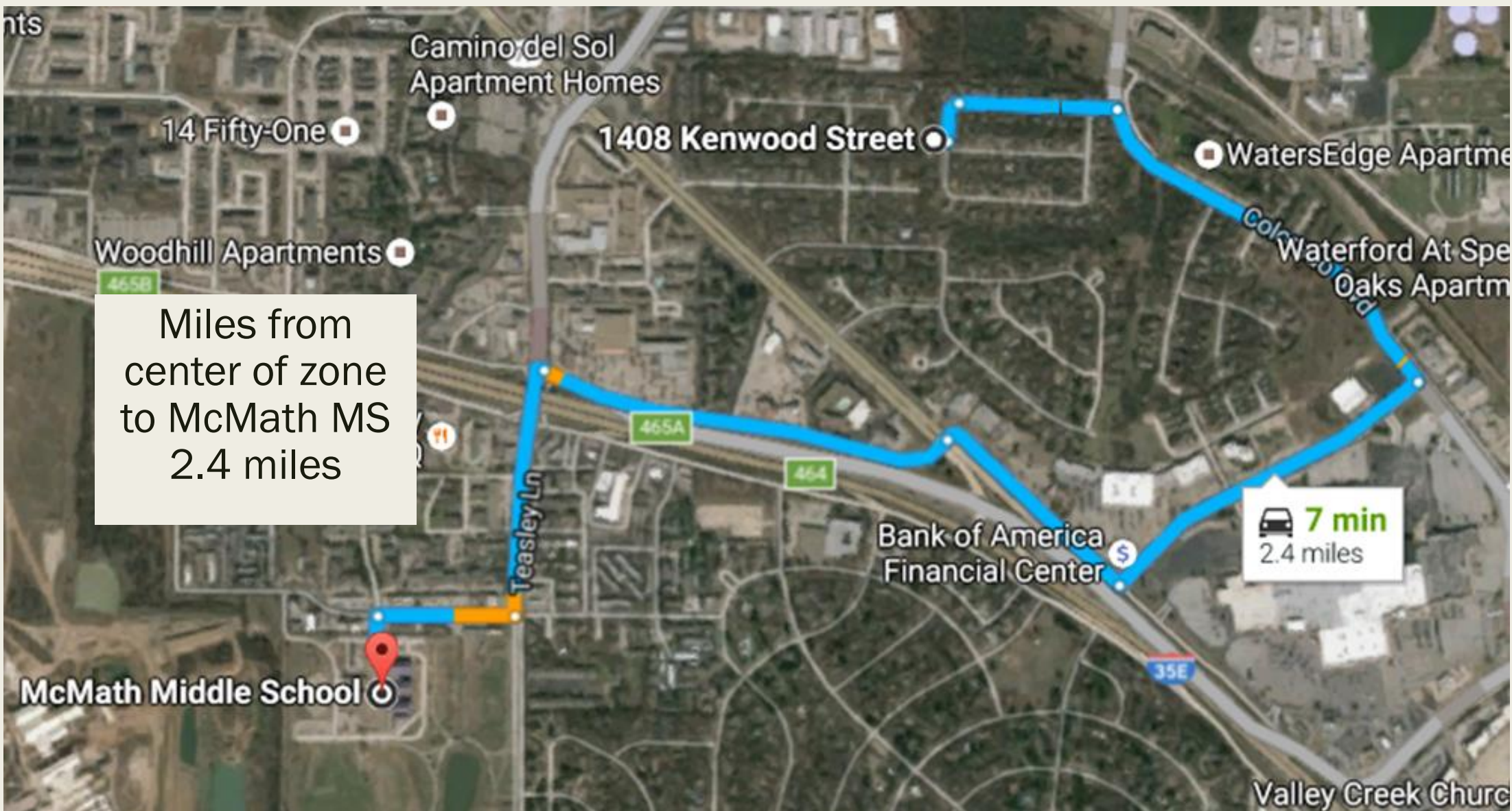
ENROLLMENT PROJECTIONS

CAMPUS	Capacity	Current 2016/17	2017/18	2018/19	2019/20	2020/21	2021/22	2022/23	2023/24	2024/25	2025/26	2026/27
MCMATH	1,181	750	802	808	849	893	948	997	1,081	1,159	1,229	1,325
MYERS	1,323	899	813	878	877	918	921	940	920	974	998	1,025

- Legend**
- Current Middle Boundaries
 - Planning Areas**
 - CALHOUN
 - CROWNOVER
 - HARPOOL
 - MCMATH
 - MYERS
 - NAVO
 - RODRIGUEZ
 - STRICKLAND

Miles from center of zone
to Myers MS
5-6 miles





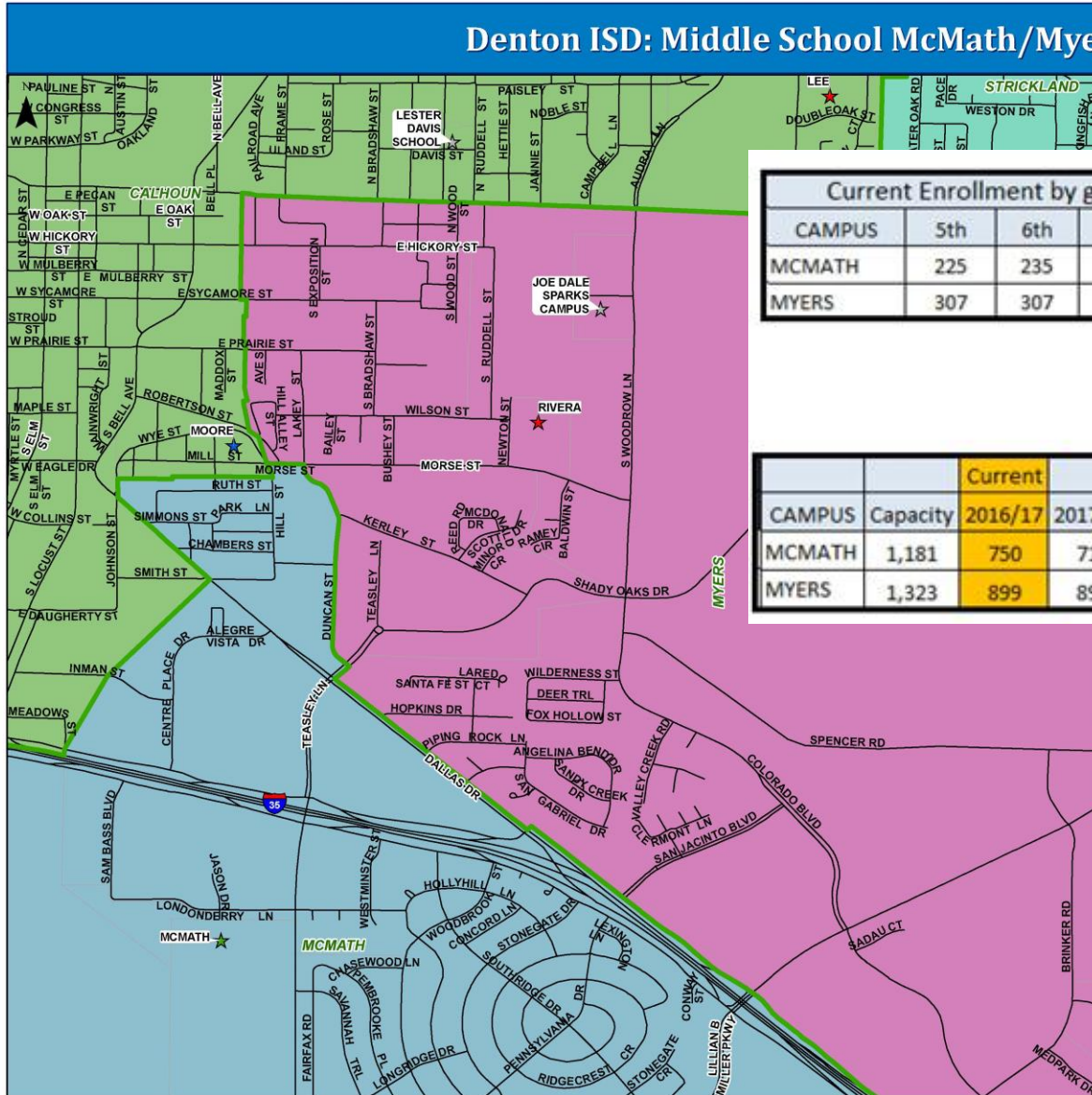
Miles from center of zone to McMATH MS 2.4 miles

7 min
2.4 miles

What if no adjustment is made?

Denton ISD: Middle School McMath/Myers Current

DRAFT



Current Enrollment by grade at McMath and Myers based on DISD provided enrollment files.

CAMPUS	5th	6th	7th	8th	5TH-7TH	6TH-8TH	ED (6TH-8TH)	%ED	CAPACITY	UTILIZATION
MCMATH	225	235	241	274	701	750	421	56%	1,181	64%
MYERS	307	307	286	306	900	899	533	59%	1,323	68%

CAMPUS	Capacity	Current	ENROLLMENT PROJECTIONS									
		2016/17	2017/18	2018/19	2019/20	2020/21	2021/22	2022/23	2023/24	2024/25	2025/26	2026/27
MCMATH	1,181	750	719	725	766	810	865	914	998	1,076	1,146	1,242
MYERS	1,323	899	896	961	960	1,001	1,004	1,023	1,003	1,057	1,081	1,108

Legend

Current Middle Boundaries

Planning Areas

MID_NAME

- CALHOUN
- CROWNOVER
- HARPOOL
- MCMATH
- MYERS
- NAVO
- STRICKLAND

Frequently Asked Questions

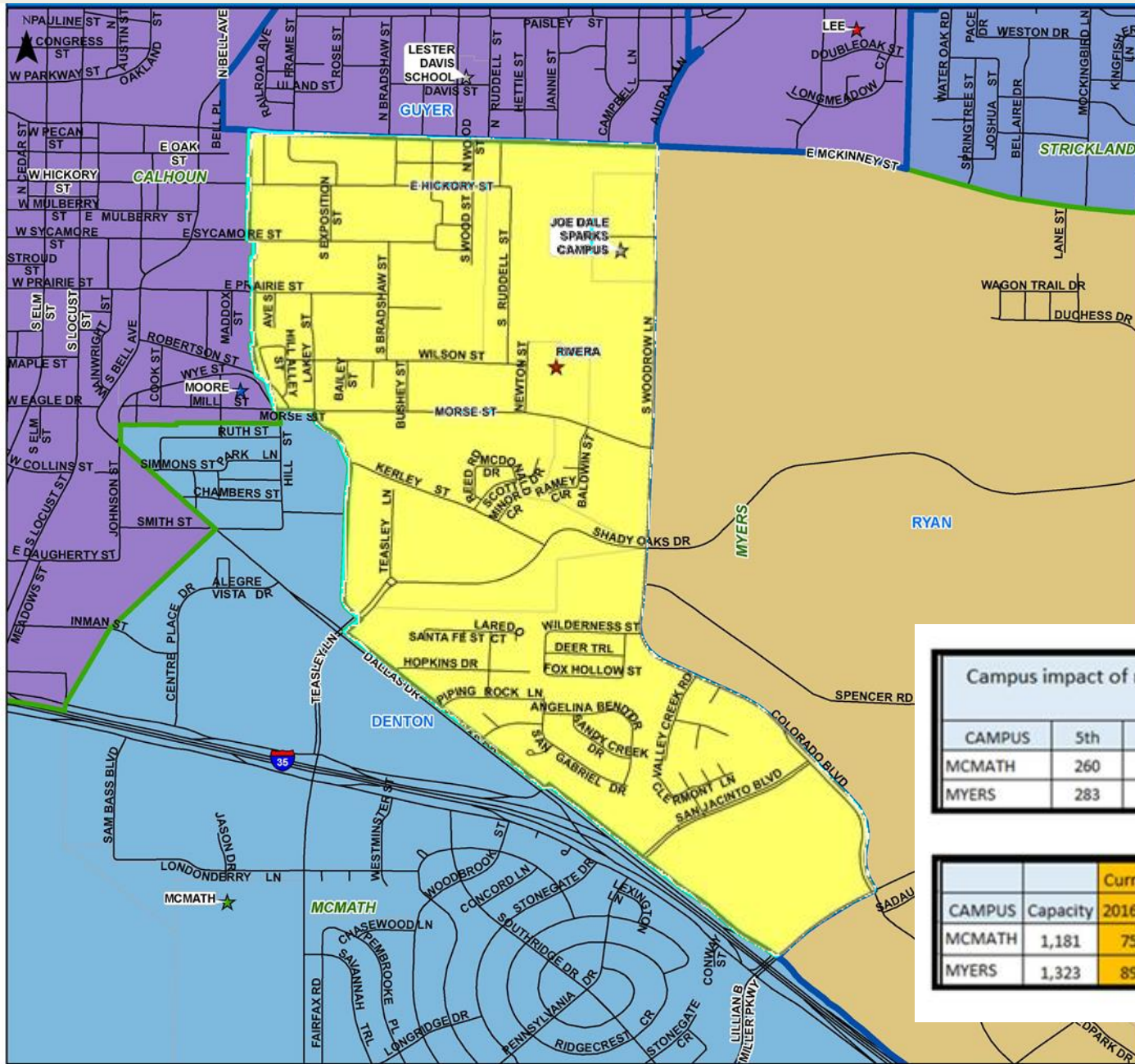
- Will there be transportation service?
- How often does rezoning occur?
- What guarantee do we have that our children will not be assigned to another school in a few years?
- What about programs?
- Will current students be given a choice to stay?

Questions & Answers

For more information on the proposed attendance zones or meetings, contact the District at (940) 369-0007

BREAK

- 15 minute break
- Opportunity to review the PROPOSED Adjustment
- DISD team will answer questions
- Opportunity to complete feedback forms



Campus impact of moving students from Myers to McMath based on 2016/17 Students residing in impacted area.

CAMPUS	5th	6th	7th	8th	5TH-7TH	6TH-8TH	ED (6TH-8TH)	%ED	CAPACITY	UTILIZATION
MCMATH	260	274	275	309	809	858	421	49%	1,181	73%
MYERS	283	281	274	295	838	850	533	63%	1,323	64%

CAMPUS	Capacity	Current	ENROLLMENT PROJECTIONS									
		2016/17	2017/18	2018/19	2019/20	2020/21	2021/22	2022/23	2023/24	2024/25	2025/26	2026/27
MCMATH	1,181	750	802	808	849	893	948	997	1,081	1,159	1,229	1,325
MYERS	1,323	899	813	878	877	918	921	940	920	974	998	1,025